



Acoustical Surfaces, Inc.

Soundproofing, Acoustics, Noise & Vibration Control Specialists

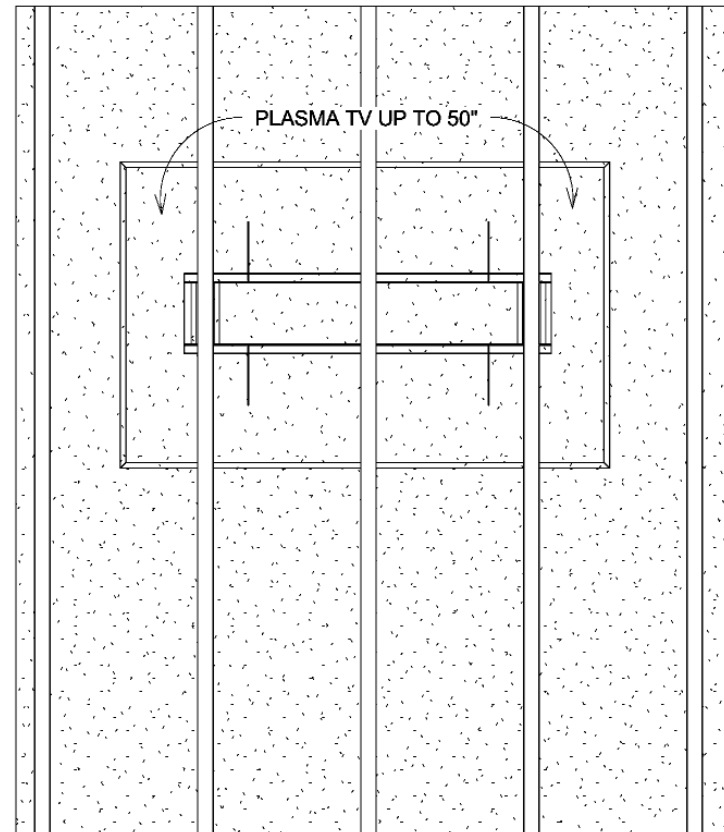
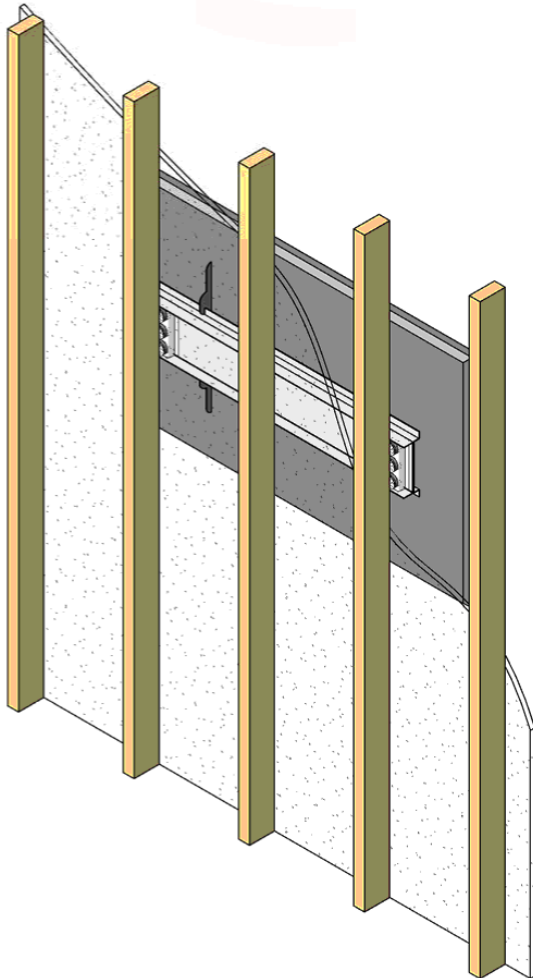
123 Columbia Court North • Suite 201 • Chaska, MN 55318
(952) 448-5300 • Fax (952) 448-2613 • (800) 448-0121

Email: sales@acousticalsurfaces.com
Visit our Website: www.acousticalsurfaces.com

We Identify and **S.T.O.P.** Your Noise Problems

A1 RSIC-1 FLAT SCREEN MOUNT (RSIC-FS)

SCALE: 3/4" = 1'-0"



Continued on next page...



Acoustical Surfaces, Inc.

Soundproofing, Acoustics, Noise & Vibration Control Specialists

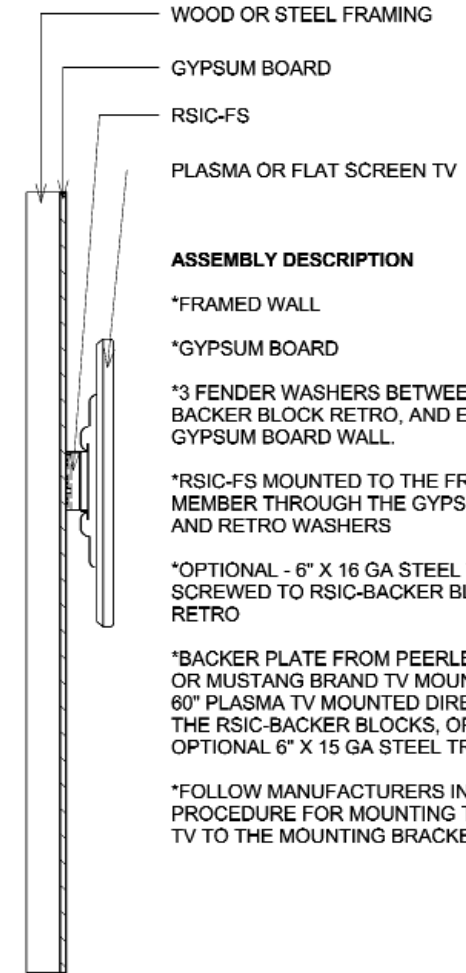
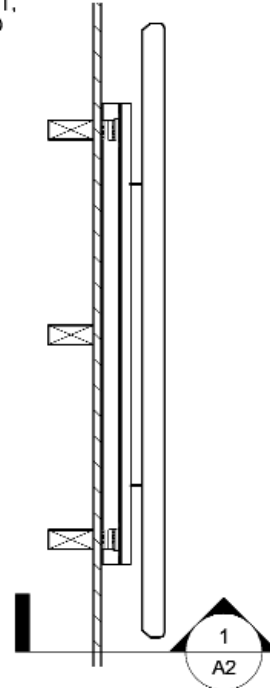
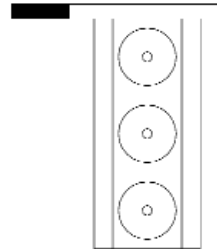
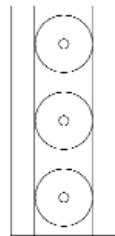
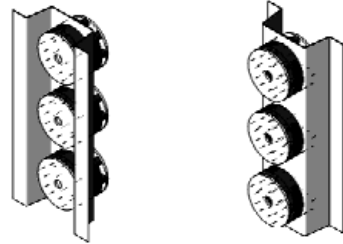
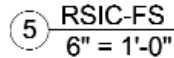
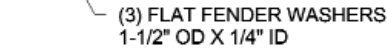
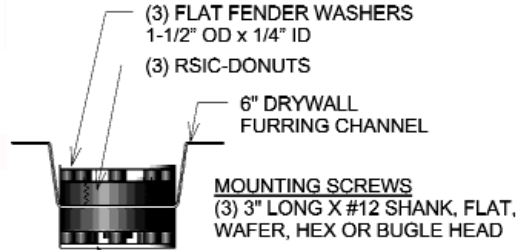
123 Columbia Court North • Suite 201 • Chaska, MN 55318
 (952) 448-5300 • Fax (952) 448-2613 • (800) 448-0121

Email: sales@acousticalsurfaces.com
 Visit our Website: www.acousticalsurfaces.com

We Identify and **S.T.O.P.** Your Noise Problems

A2 FLAT SCREEN MOUNT (RSIC-FS)

SCALE: As indicated



- ASSEMBLY DESCRIPTION**
- *FRAMED WALL
 - *GYPSUM BOARD
 - *3 FENDER WASHERS BETWEEN RSIC BACKER BLOCK RETRO, AND EXISTING GYPSUM BOARD WALL.
 - *RSIC-FS MOUNTED TO THE FRAMING MEMBER THROUGH THE GYPSUM BOARD, AND RETRO WASHERS
 - *OPTIONAL - 6" X 16 GA STEEL TRACK SCREWED TO RSIC-BACKER BLOCK RETRO
 - *BACKER PLATE FROM PEERLESS BRAND OR MUSTANG BRAND TV MOUNT, FOR 32" ~ 60" PLASMA TV MOUNTED DIRECTLY TO THE RSIC-BACKER BLOCKS, OR TO THE OPTIONAL 6" X 15 GA STEEL TRACK
 - *FOLLOW MANUFACTURERS INSTALLATION PROCEDURE FOR MOUNTING THE PLASMA TV TO THE MOUNTING BRACKET.